

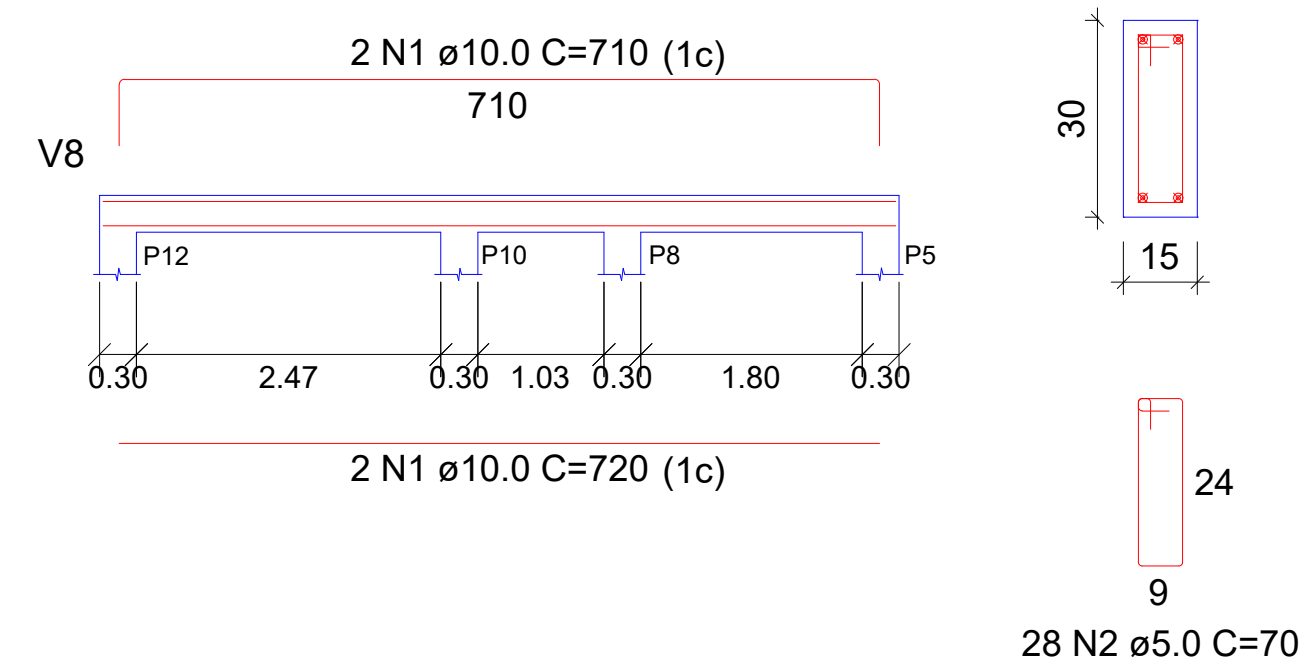
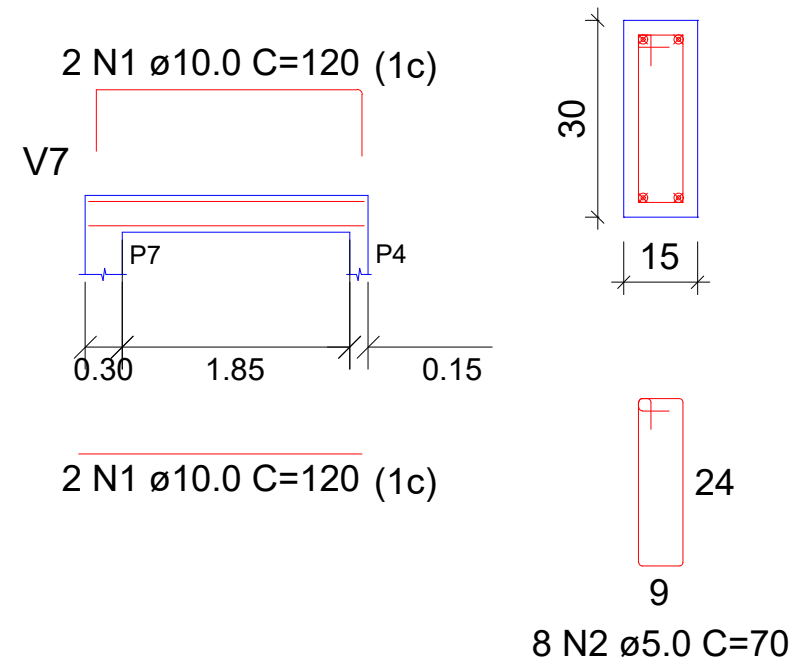
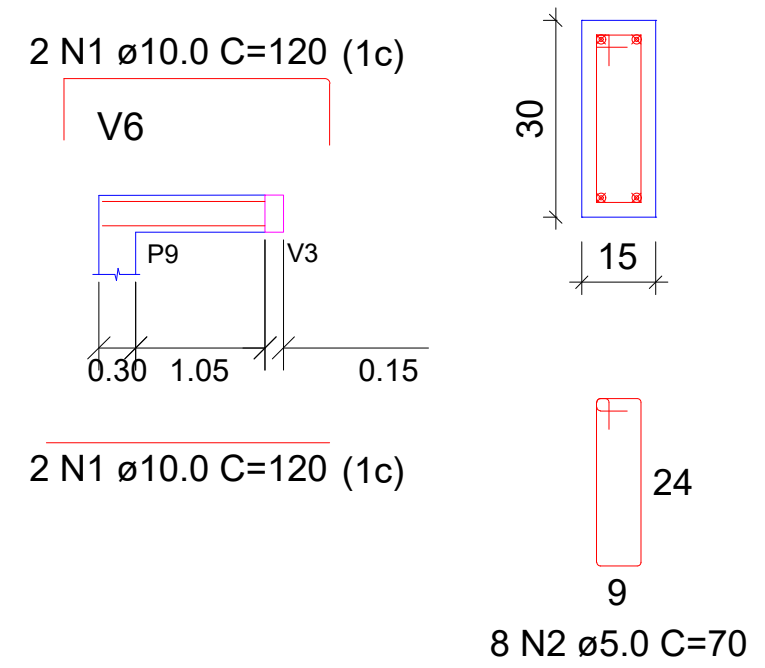
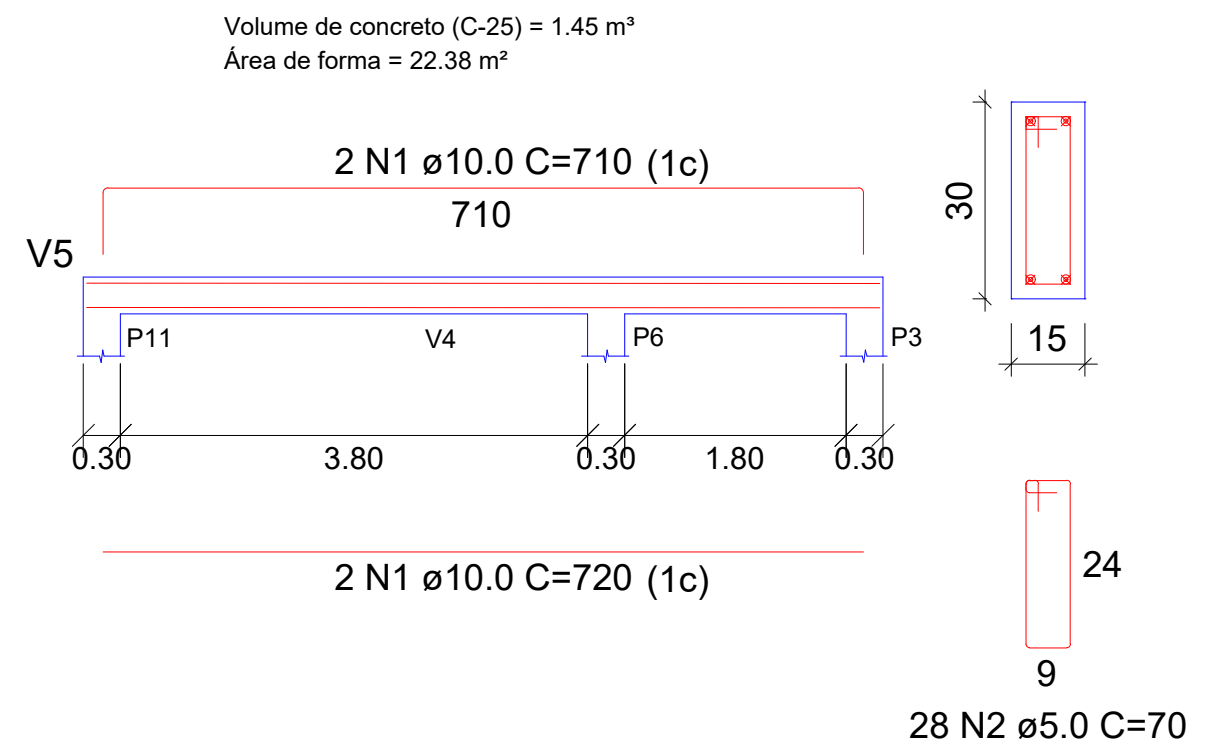
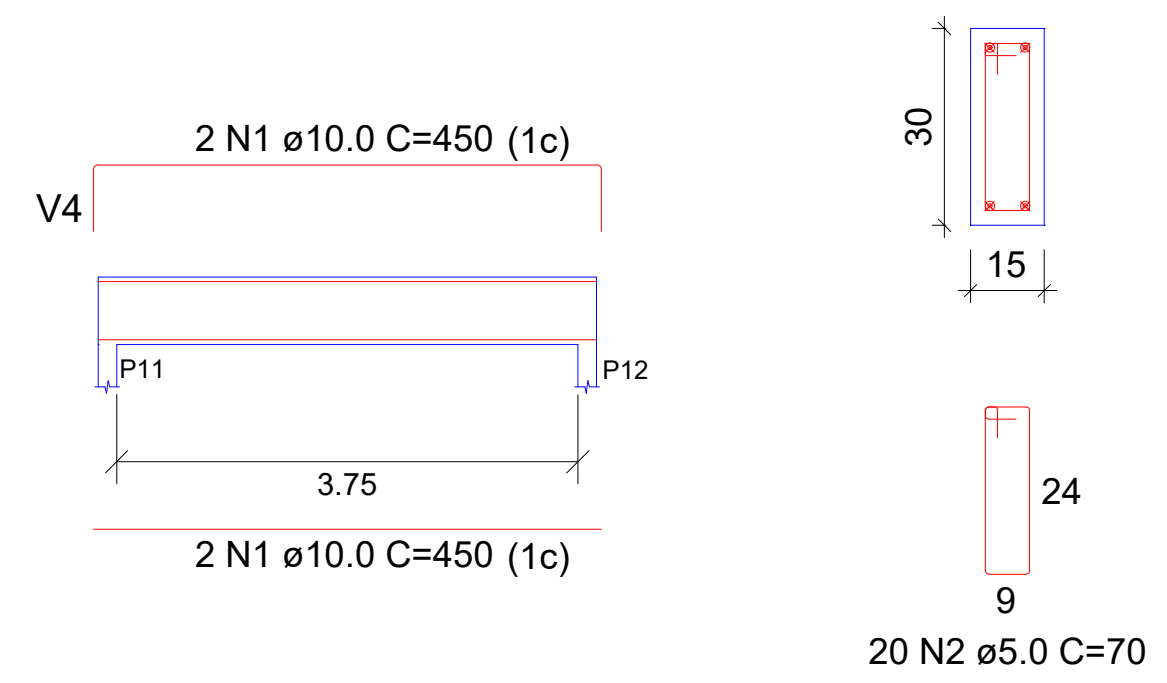
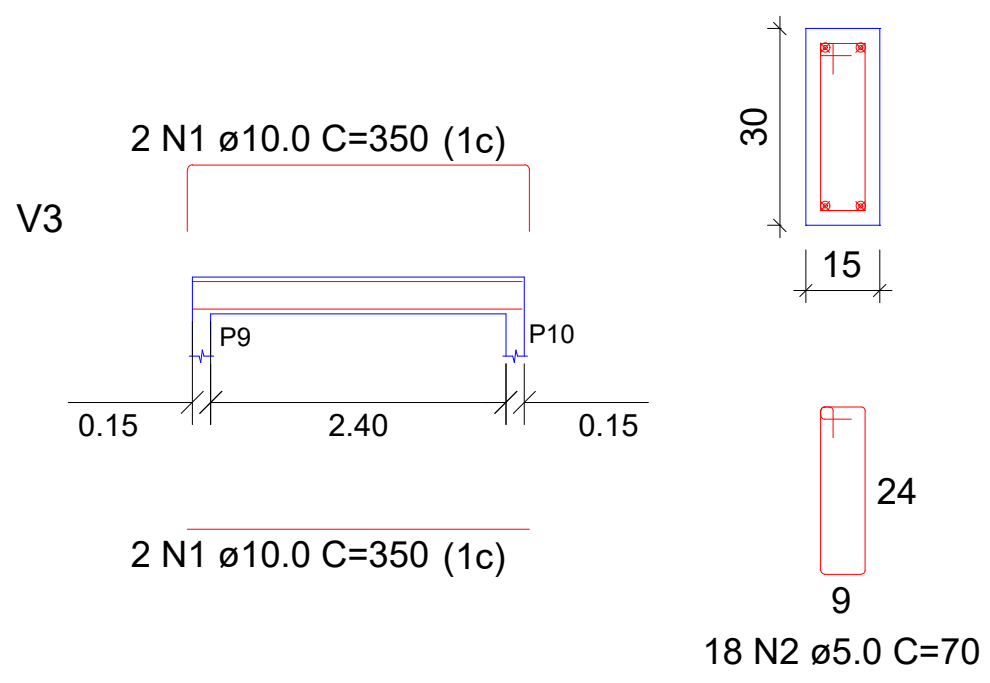
RELAÇÃO DO AÇO - VIGAS BALDRAME


AÇO	N	DIAM (mm)	QUANT	C.UNIT (cm)	C.TOTAL +10% (cm)
CA50	1	10.0	VAR	VAR	14784
CA60	2	5.0	VAR	VAR	11704

RESUMO DO AÇO E CONCRETO

AÇO	DIAM (mm)	C.TOTAL (m)	PESO + 10% (kg)
CA50	10.0	147.8	91.2
CA60	5.0	117.1	18.0
PESO TOTAL (kg)			
CA50	91.2		
CA60	18.0		

Volume de concreto (C-25) = 1.45 m³
Área de forma = 22.38 m²





PREFEITURA DE

CAMPOS

UMA NOVA HISTÓRIA

PREFEITURA MUNICIPAL DE CAMPOS DOS GOYTACAZES

SECRETARIA MUNICIPAL DE OBRAS E INFRAESTRUTURA

TÍTULO: Projeto Estrutural – Revitalização da Praça do Sossego

ASSUNTO: Planta de Detalhamento das Vigas – Baldrame

DATA: NOV./2024

PRANCHA:

6 / 6

Responsável Técnico

CREA: 2014102986